

COLLEGE PARK CITY-UNIVERSITY PARTNERSHIP

2022 Annual Report



Dr. Wallace D. Loh
PRESIDENT
UNIVERSITY OF MARYLAND
2010 – 2020

With appreciation, the College Park City – University Partnership honors Dr. Wallace D. Loh for his commitment to making our community a better place to live and work through collaborative programs in education, development, transportation, sustainability, and public safety.

December 2021

TABLE OF CONTENTS

TABLE OF CONTENTS.....	3
LEADERSHIP MESSAGES	4
2022 BY THE NUMBERS.....	5
YEAR IN REVIEW	6
HOUSING AND DEVELOPMENT	7-10
TRANSPORTATION AND MOBILITY	11-12
EDUCATION	13
PUBLIC HEALTH AND SAFETY.....	14
FINANCIAL POSITION.....	15-17
2023 WORK PLAN.....	18
PARTNERSHIP VISION, MISSION, AND VALUES.....	19
LEADERSHIP AND CONTACT INFORMATION.....	20

LEADERSHIP MESSAGES



Richard Wagner
AIA, PhD

Board Chair

Dear College Park Neighbors,

Last year marked the 25th anniversary of the founding of the College Park City-University Partnership, formed to build a better community for the citizens of College Park and the students, faculty, and staff of Maryland's Flagship institution of higher education. Since its inception as one of the nation's first such "town/gown" organizations in the country, the Partnership has led the way in developing a comprehensive approach to bettering our collective community through assisting in the creation of public secondary charter school, creating and running a Homeownership program, improving public safety and health, as well as planning and implementing a more bikeable and walkable environment. Perhaps this cooperation between a major state university and its host city is best exemplified by the recent opening of the new City Hall/University Office Building in downtown College Park, the first such building in the United States. And it should be noted that this spirit of cooperation extends beyond the two partners to include Prince George's County, regional organizations such as Maryland-National Capital Park and Planning Commission, and the State of Maryland.

This Report describes the major accomplishments of the Partnership over the past year as well as looks forward to some of the new projects we are working on during 2023. I invite you to join us in this effort to make our community one of the top university communities in the country.

Sincerely,



Susan Hartmann

Executive Director

Dear Friends,

2022 marked a busy and exciting year for the College Park City-University Partnership as we celebrated 25 years serving the College Park community! It is my privilege to join the organization as we celebrate our past accomplishments and prepare for our next chapter.

Following two years of COVID-related cancellations and program impacts, 2022 saw the revival of community events and activities that connect neighbors to all that makes College Park a top college town. There has been a tremendous amount of work done by the Partnership and its partners over the course of the year to advance the goals of the *University Community Vision 2030* – goals related to housing, transportation, economic development, education and community connection. We are continuing to facilitate collective and collaborative approaches to community improvement through our partners – the City of College Park, the University of Maryland, Prince George's County, and the State of Maryland – who have continued to support our work:

- The Community Preservation Trust is funded at \$15.8M, staff has been hired, and all the necessary agreements to start the program are in place.
- Design and engineering for the addition of a Campus Drive Bike Path and Riverwalk along the Paint Branch in midtown College Park has been negotiated and funded with \$1.293 million in state bond funding.
- Trolley Trail Day planning kicked off in the fall to revive this popular community event following cancellations due to COVID.

We continue to make much progress, and this is only the beginning of an exciting next chapter for the College Park City-University Partnership. I invite you to read about our successes in 2022 and to join us for those ahead in 2023.

Sincerely,



2022 BY THE NUMBERS

96

Bike score (out of 100) measured at College Park City Hall per walkscore.com

\$1,293,000

State dollars for Campus Drive Bike Path and Riverwalk area secured by Delegate Ben Barnes and 21st Delegation

\$500,000

Dollars awarded from the Maryland State Department of Housing and Community Development for the Community Preservation Trust

1

College Park is ranked the #1 healthiest college town in US, according to BrokeScholar, a search engine for scholarships for college students

256

Students at College Park Academy from the local neighborhood schools in the catchment area

19

U.S. News and World Report ranked the University of Maryland a Top 20 public national university

150+

The number of years that College Park has been a center of education, experimentation, and exploration, a place where creative minds pursued innovation

263

#CollegeParkScene posts about local businesses to date.

40

The number of employees at Monarch Preschool and the University of Maryland's Child Development Center

9/16

The date that County Executive Angela Alsobrooks declared as Frances Tiafoe Day in Prince George's County.

\$150,000

Total amount of National Capital Strategic Economic Development Fund grant dollars for the Homeownership Program

78

College Park homes purchased through the Partnership's Homeownership Program since July 2015 (3 in 2022)

YEAR IN REVIEW

2022 marked the Partnership's 25th anniversary. To celebrate this momentous year, the College Park City-University Partnership, together with its partners at the University of Maryland, the City of College Park, Prince George's County, the State, and the community, made significant progress on many strategic initiatives and implementation of the *University Community Vision 2030* strategic plan.

Fundraising and planning for a new program – **The College Park Community Preservation Trust** – continued apace. \$15.8 million in federal, state, and local funding has been secured to support the program, and the Executive Director was hired in November. The Trust launch is underway, beginning with establishing the administrative and legal foundations for the Land Trust Agreement and MOU with the City. The Partnership registered the Community Preservation Trust with the State Department of Assessments and Taxation under the Affordable Housing Land Trust Act.

Participation in the **Homeownership Program** continued in 2022, with three homes purchased in 2022. The Homeownership Program provides \$15,000 in down payment and closing cost assistance to City of College Park and University of Maryland employees purchasing a home in College Park. In July, the Partnership released its FY'22 Homeownership Program report and received an additional \$150,000 grant through the Maryland Department of Housing and Community Development.

Planning for a **Campus Drive Bike Path and Riverwalk** is underway. The Partnership continued advancement of the Campus Drive Bike Path and Riverwalk along the Paint Branch from Metzert Road to Baltimore Avenue, conceptually designed by the Neighborhood Design Center. Now, the University of Maryland is serving as project manager, and we have approval to move forward with design and engineering thanks to state bond bills secured by the 21st District Delegation.

The community and the Partnership are cautiously resuming activities that were halted by the onset of the COVID-19 pandemic. The Partnership attended events like the **SGA Safety Walk** around Campus, the **5th Anniversary of the Hotel at UMD**, the announcement unveiling **Aviation Landing**, a collaborative development by the College Park Metro, the City's **Friday Night Live** and **Winter Wonderland** events, and a ribbon cutting for **College Park Academy's new murals**. In addition, Trolley Trail Day – an event to celebrate and program the 3.5-mile trail that connects Hyattsville, Riverdale Park and College Park as proposed in the 2017 Crime Prevention through Environmental Design (CPTED) report – is finally coming back. We announced in December of 2022 the highly anticipated second annual **Trolley Trail Day** will be held on Saturday, June 10th, 2023.

The work to **rebuild Baltimore Avenue** as a pedestrian- and bike-friendly boulevard continued, and the State of Maryland continued construction of the **Purple Line**. The half-mile **College Park Woods Trail** connecting the neighborhood to the rest of the trail system opened in late 2020 and has grown in popularity.

Social media growth continued in the past year, with 1,426 Facebook followers, 947 Twitter followers, and 758 Instagram followers. The Partnership's website averages 60 visits daily and the weekly e-newsletter reaches more than 2,500 people.

Finally, the College Park City-University Partnership announced a new Executive Director leadership at the end of 2022. The Partnership is poised to achieve many successful initiatives in the coming years, and this past year has been a major transition to that next level of success.

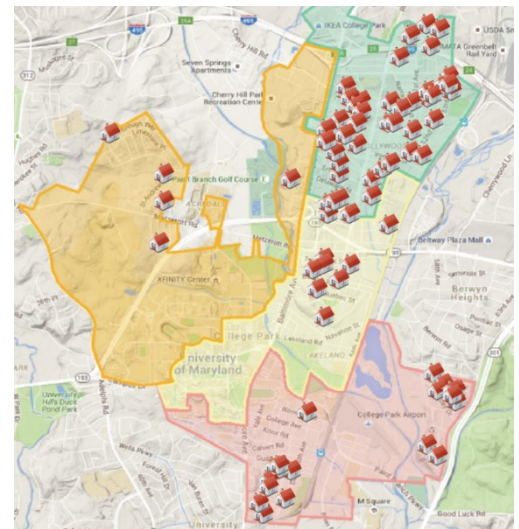
HOUSING AND DEVELOPMENT

NEIGHBORHOOD STABILIZATION

Homeownership Program

The College Park City-University Partnership's Homeownership Program provides down payment and closing cost assistance, which takes the form of a forgivable \$15,000 loan, to full-time, benefits-eligible, University of Maryland and full-time City of College Park employees who choose to live in College Park. The City and the University each provide \$50,000 in funding to the Homeownership program, and the Maryland Department of Housing and Community Development (DHCD) supports the program with grant funding. In 2022, DHCD awarded \$150,000 to the Partnership through its National Capital Strategic Economic Development Fund for the program.

In the past year, three homes were purchased through the program. Since 2015, the Partnership has helped 78 homebuyers buy homes in College Park. The Partnership also successfully coupled its program with the City's "New Neighbors" program, so that when a buyer or property qualifies, there is an easy, streamlined process for homebuyers to access both programs. To date, this has resulted in 12 former rental properties being converted to owner-occupied homes and one University of Maryland police officer successfully purchasing a home.



PROGRAM BY THE NUMBERS

78

Homes sold to date

13

Coupled with City New Neighbors program
(12 rentals; 1 police)

2

Coupled with Maryland Mortgage Program

85

UMD employees to date

173

New College Park residents

70

Percent first time homebuyers

51

Percent new employees (0-3 years)

\$77,685

Average salary

77

Percent indicated they would usually
walk/bike/bus to work

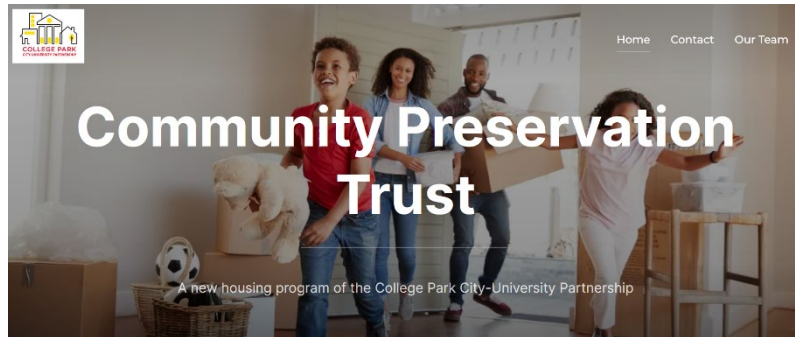
The Partnership encourages University and City staff to live in the community where they work. Each home purchased through our program enriches and protects our City-University community – attracting businesses, visitors, students, community members, and future employees. We've documented the stories of those who have planted roots in College Park through our program. Visit the College Park Partnership's website to read their stories:

www.collegeparkpartnership.org/homeownershipprogram/homebuyers

HOUSING AND DEVELOPMENT

Community Preservation Trust

The Partnership launched the College Park Community Preservation Trust (The Trust) to provide long-term intervention to address affordable housing concerns facing the community. As the home of the state's flagship campus, the availability of affordable housing is of high importance to the City, region, and state.



The high cost and limited supply of housing in College Park poses challenges to achieving community stabilization and affordability goals. The significant number of undergraduate students skews the housing market toward rentals and has resulted in many single-family homes being converted into group rental housing. To combat this, and to stabilize residential neighborhoods, the City, University and Partnership jointly adopted *University Community Vision 2030*, which includes a commitment to create a Community Preservation Trust (The Trust).

The Trust will purchase and renovate single-family homes and sell them to qualified income-eligible home buyers. Participating homebuyers will sign a 99-year renewable land trust agreement that ensures shared equity between the buyer and The Trust. Initial funding has been allocated at \$15.8 million in federal, state, and local funding. Once established, The Trust will be self-supporting through a mix of fees, profit from sale of houses, and additional outside income.

The College Park City Council approved The Trust's Business Plan in October of 2022. In November of 2022, the Partnership selected Daniel Cunningham to serve as Executive Director of the Community Preservation Trust. The program is in its final phases of preparation and the Partnership looks forward to procuring the first property in 2023.



HOUSING AND DEVELOPMENT

PLACEMAKING

Riverwalk. The Partnership engaged the Neighborhood Design Center to create options for a Riverwalk along the Paint Branch in the Northgate Park area. This is a collaborative effort by the City of College Park, the University, and M-NCPPC. A Riverwalk at this location can help College Park continue to celebrate its natural resources, provide more biking and walking options, and make for a more interesting midtown. Beginning in spring and summer 2020, the Partnership and the Neighborhood Design center have held focus groups with participants representing the City, the University, community members, students, and local business owners. Delegate Ben Barnes and the 21st District Delegation have provided \$1,293,000 total in State bond bills to initiate planning for this and the Campus Drive project (see page 13).



College Park City Hall. In 2021, the City of College Park and the University of Maryland realized a joint vision that has been in the works for two decades. The new College Park City Hall building includes offices for city employees as well as university employees, a large amount of community space, meeting rooms, city council chambers, new local businesses, and a prominent public plaza in the heart of downtown College Park to host events, activities, music, and commerce. The City of



College Park began hosting *Friday Night Live* events, which brought local food trucks, breweries, and musicians to the City Hall plaza. The Partnership, together with UMD, City, County and State leaders shared their collaboration as a national best practice at the International Town-Gown Association summer conference in South Carolina in June of 2022.

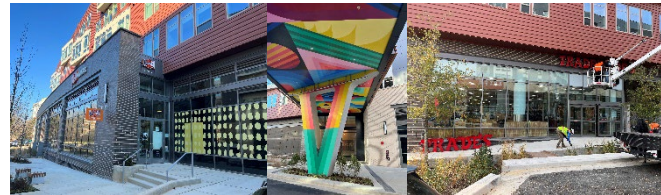


The Hotel at UMD 5th Anniversary. In fall 2022, Partnership staff joined the City of College Park, University of Maryland and the Terrapin Development Company to celebrate the Hotel at UMD's 5th anniversary in the City of College Park. The Hotel has continued to provide great lodging and space for visitors, conferences, meetings, and more. In addition, the Spa at the Hotel at UMD recently added Hair + Space, a local blow dry bar, to its services.

Aviation Landing. In November 2022, officials from Prince George’s County, Terrapin Development Company, the 4 Castles Company, and the University of Maryland announced a 1.3 million-square-foot mixed-use project named Aviation Landing. This will include restaurants, shops and approximately 900 residential units when complete. This project will replace a County-owned parking lot and provide valuable growth opportunities to the Discovery District, College Park metro station and the future Purple Line.



The Aster and Trader Joe’s. In October, Trader Joe’s opened its first location in Prince George’s County in the City of College Park. This 14,662-square-foot grocery store is part of Aster, a new mixed-use complex south of the University of Maryland’s campus. The Aster complex includes 61,000 square feet of ground floor retail space, 393 rental units and two buildings connected by a glass-walled skybridge. The Aster residential community started move-ins in August.



Outdoor Performance Series/UMD’s Arts for All initiative. In 2022, Partnership staff continued to engage with University and City-affiliated arts and engagement entities to discuss the University’s Arts for All Initiative, with the goal of reviving the Outdoor Performance Series.



LOCAL BUSINESS DEVELOPMENT

#College Park Scene is a Partnership-sponsored social media effort that highlights College Park businesses—new and old—promotes College Park’s restaurants, arts and music scene, and to encourages participation in the local economy. It also highlights local parks and playgrounds, parking locations, and daycare and options to encourage prospective the community to take advantage of all the College Park has to offer. With 263 posts to date, #CollegeParkScene has highlighted the cultural and recreational activities available in College Park.



Marketing. The *University Community Vision 2030* called for developing and implementing a coordinated marketing approach to establishing College Park as a top college town to live, work, play and learn. To support this work, a taskforce met throughout 2022 to engage a marketing consulting firm and develop recommendations to guide collaborative and coordinated marketing efforts. In the summer, a dozen interviews were conducted with stakeholders to inform the recommendations and marketing approach. Beginning in 2018, the Partnership has hosted numerous focus groups with local business owners, conducted surveys of nearly 1,000 respondents and completed two phases of planning work. Next steps include reengaging the taskforce and moving forward with recommendations included in the report.

TRANSPORTATION AND MOBILITY

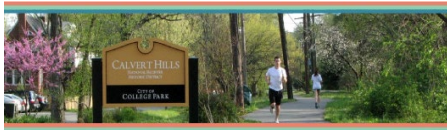
BALTIMORE AVENUE REBUILD

Rebuild. The Partnership continues to coordinate with the Maryland State Highway Administration (SHA) to rebuild Baltimore Avenue. In 2017, the Partnership forged an agreement for 5-foot wide planted buffers between the sidewalk and the curb in midtown College Park. In 2018, the Partnership brought parties together with SHA—including representatives of the City, the University, and the County—upon learning that the construction timeline estimate had increased to 6 years. The Partnership and its partners successfully reduced SHA’s timeframe for the completion of the work. Construction began in June 2020 and is expected to complete in late summer 2023.



Pedestrian Lighting. As part of the rebuild, the University, City, and the Partnership have arranged for sidewalk pedestrian lighting along a redeveloped stretch of Baltimore Avenue. The Partnership is facilitating a state bond bill of \$1.3 million to complete this lighting project.

CRIME PREVENTION THROUGH ENVIRONMENTAL DESIGN: TROLLEY TRAIL



The City-University Partnership Presents:
Crime Prevention through Environmental Design (CPTED) Assessment
Report Rhode Island Avenue Trolley Trail Findings and
Recommendations

In 2018, the Partnership initiated efforts to advance Trolley Trail improvements through implementation of recommendations included in a 2017 analysis. This effort is ongoing, and the Partnership continues to work with its partners at the City of College Park and the University of Maryland, as well as M-NCPPC, Prince George’s County, the Town of Riverdale Park, and the City of Hyattsville to complete implementation. In 2021, Riverdale

Park added lighting to its section of the trail; the Partnership has secured funding to enhance lighting and install security cameras along the trail in College Park.

TROLLEY TRAIL DAY

Last held in June 2019, Trolley Trail Day is a community event that includes live local music, arts activities, children’s activities, local history, exercise and wellness activities, and specials on a wide variety of food and beverages. Paused for two years due to the COVID-19 pandemic, planning for Trolley Trail Day 2023 began in the fall of 2022. In December, June 10th was selected as the official date of Trolley Trail Day 2023. This expanded event will now run from Hyattsville to the Hollywood, with hubs at the Hollywood Shopping Center, in Berwyn, Lakeland, at Old Parish House, Riverdale Park Station and Riverdale Town Center and at the Hyattsville Justice Center. The Partnership is excited to support planning for a fun event that brings the whole community together.



TRANSPORTATION AND MOBILITY

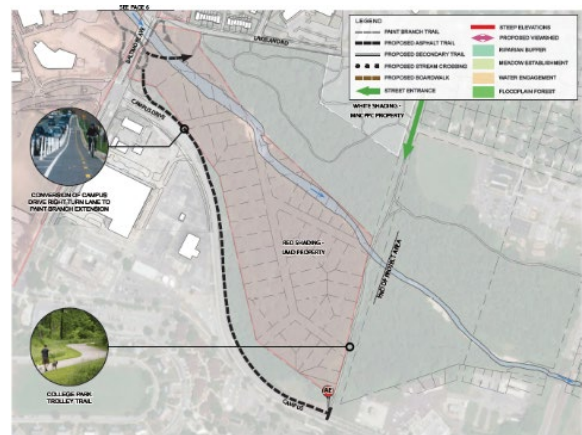
TRAIL INFRASTRUCTURE AND SAFETY



Trail Underpasses. The Partnership is continuing to monitor and support the Maryland-National Capital Park and Planning Commission to address both short- and long-term conditions at two trail locations that pass under bridges: one at Baltimore Avenue, and the other at the CSX underpass near Lake Artemesia. Both suffer from flooding, mud, and debris from the Paint Branch, and critical improvements will enhance pedestrian safety and access. The Partnership will participate in ongoing efforts to ensure that the projects move into their next phases, and that improvements are completed. The first phase of

short-term improvements at the CSX underpass was completed in Summer 2021. The next phase is underway and will be led by M-NCPPC.

Campus Drive Bike Path. In 2020 and 2021, the Partnership was awarded \$1.293 in state bond funds to design and engineer a bike path on the northern section of Campus Drive and to design the Riverwalk (see page 9). In 2022 the Partnership convened M-NCPPC and University of Maryland legal and project management teams to ensure that the multi-jurisdictional collaboration required to assemble the trail was in place. The goal of these project is connect the Trolley Trail to campus and downtown, as well as midtown College Park. The Partnership continues to work closely with the Maryland State Highway Administration (SHA) to seek approvals for this and other bicycle and pedestrian improvements in College Park.



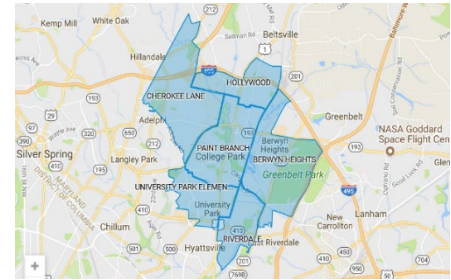
BIKESHARE

The Partnership's Transportation Committee continues to support micro-mobility options in College Park. In 2022, the City and the University transitioned the bikeshare system to VeoRide, which provides a selection of bikes and scooters to its customers. The transition has been successful, with hundreds of thousands of VeoRides throughout the year. In addition, there are four locations approved for the county-wide Capital Bikeshare program: Mowatt Lane Parking Garage, Baltimore Avenue and Campus Drive/The Hotel at the UMD, College Park Metro, and Guilford Drive.

EDUCATION

COLLEGE PARK ACADEMY

In 2022, the Partnership's Education Committee continued its support of the College Park Academy (CPA), one of the most advanced “bricks and clicks” middle/high schools in the country. Launched with assistance by the Partnerships 2012, CPA students have demonstrated consistently strong performance in state-wide testing and continue to earn some of the highest test scores in the state.



CPA's Local Catchment Area

College Park Academy’s local catchment area dictates that 35 percent of students admitted to CPA must come from the boundaries of Berwyn Heights, Cherokee Lane, Hollywood, Paint Branch, Riverdale, and University Park elementary schools. In 2022, 256 CPA students (36.9.6 percent) were residents of the local catchment area. Ninety-five percent of CPA students enrolled in Advanced Placement courses. In 2022, CPA received 1,492 admissions applications and Partnership staff continue to help promote enrollment from students living in the local catchment area. Extending CPA’s educational reach to a K-5 elementary school is currently under consideration.



In October 2022, the College Park Academy unveiled murals throughout the school dedicated to displaying the possibilities of academic and creative career fields.

CHILD CARE AND PRE-K

University of Maryland Childcare:

The University of Maryland opened its Child Development Center in the former Calvert Road School building in 2021. This daycare center serves UMD employees and City residents with children six months to five-years old. This project was a cooperative effort between the University, the City and the Partnership and reflects a shared commitment to expanding childcare options in the City. The University has contracted Bright Horizons, a national childcare provider, to operate this childcare. As of December 2022, 94 students were enrolled, and it employs 30 faculty and staff.



Monarch Preschool: The Children’s Guild, supported by a local community advisory group, established a high-quality, project-based learning, preschool in North College Park. The Partnership facilitated discussions with the College of Education regarding their involvement in the center, including the potential it holds as a site for their students to complete internships, conduct educational research and empirical observations, and to hire UMD College of Education graduates. The Monarch Preschool opened late spring 2021. As of December 2022, the preschool enrolled 49 students and employed eight staff members; school leaders anticipate that when they have received all permits they will operate with a full capacity of 120 students.

PUBLIC HEALTH AND SAFETY

PUBLIC SAFETY CAMERAS

The Partnership continues to work with the City to add new security cameras along the Trolley Trail between downtown College Park and Riverdale Park Station. The Partnership secured state bond funding from the Department of General Services in 2017 to support this project and is actively leading coordination to ensure installation using remaining grant funds. The City Council of approved the public safety cameras contract and installation is anticipated by late summer 2022. The Partnership is also collaborating with the cities of Hyattsville and Riverdale Park to enhance their investment in additional safety measures on the trail. Riverdale Park added lighting on the Trolley Trail in December 2021.



City Camera

CODE OF CONDUCT AND POLICE SERVICES STUDY REVIEW

The Partnership receives regular briefings from the University of Maryland Office of Student Conduct and reviews data on the number of off-campus referrals and nuisance complaints. There is an overall low rate of recidivism, and the work of the University of Maryland Police Department, the City, and Office of Student Conduct is successful in contributing to that low number.

The Partnership also reviews the results of the City’s Assessment of Public Safety and Police Services, which determined that crime in the City of College Park is relatively low, and that there is relatively high satisfaction among members of the community regarding the role of police and public safety, more broadly.

SGA PUBLIC SAFETY WALKS



The Partnership participates in efforts to promote public safety on and off campus. Each year, the Student Government Association (SGA), together with the University’s Vice President of Administration and Finance and the University of Maryland’s Police Department, hosts an event to review safety across campus paths. Participants — including students, administrators, police officers, Partnership staff and other community leaders — split into groups to tour three separate routes: North Campus, South Campus and the City of College Park.

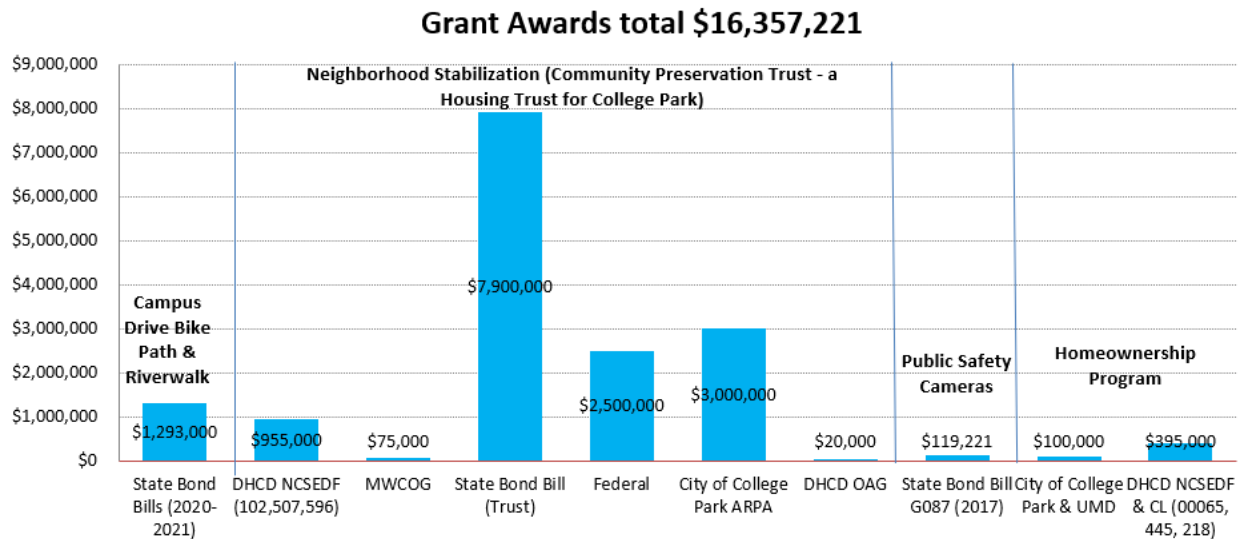
This event, which has been occurring for more than 15 years, unites the College Park community for a discussion about how to make the University’s campus and its surrounding areas more safe, sustainable, and accessible. The Partnership will continue its support and participation in these efforts.



FINANCIAL POSITION

FY'22 FINANCIAL SUMMARY

In Fiscal Year 2022, the City of College Park and the University of Maryland jointly funded the City-University Partnership. Each contributed \$155,000 (\$310,000 total) for the organization’s operation. The Partnership’s Homeownership Program received \$150,000 from the Maryland Department of Housing and Community Development (DHCD), matched by the City and the University equally. DHCD also awarded \$500,000 to stabilize College Park neighborhoods via the Community Preservation Trust. The Community Preservation Trust secured \$15.8 million from federal, state and local sources to support the Community Preservation Trust. The Partnership still has \$1,293,000 in State Bond Bills for the Campus Drive Bike Path, and Riverwalk. This is in addition to the 2017 Bond Bill funds that supported the development of a sidewalk between the Riverdale Park Station and College Park’s Albion Road and will support the addition of public safety cameras on the Trolley Trail at Albion Road. The following chart depicts the grant funds that were awarded and managed in FY’22.



FY'23 TO DATE (JULY 2022-December 2023)

The Partnership is financially healthy. The City and the University have continued to contribute equally to the Partnership, each contributing \$155,000 toward the Partnership’s general operating expenses. Current and projected expenses in the Partnership’s general fund include salaries and benefits for its executive director, associate executive director, executive director for the Community Preservation Trust, program associate, bookkeeper, and accountant. Expenses also reflect audit and tax services, insurance, interns, architectural and engineering design planning, and meeting support expenses.

As with last year, in addition to the general operating budget, the Partnership has had success obtaining grant funds to complete projects and initiatives in the community that assist implementing the strategies laid out in the *University Community Vision 2030*. Already this year, the Partnership’s Homeownership Program was awarded \$150,000, which was matched by the City and the University. The Partnership expects to continue to support projects and initiatives through grant funding in FY’23.

FINANCIAL POSITION

FY'22 STATEMENT OF FINANCIAL POSITION

	<u>2022</u>	<u>2021</u>
ASSETS		
CURRENT ASSETS		
Cash	\$673,698	\$436,568
Certificate of deposit	107,033	106,928
Unconditional contributions receivable	30,000	----
Prepaid expenses	<u>4,800</u>	----
 Total current assets	 815,531	 543,496
 OTHER ASSETS		
Loans receivable - home ownership program	<u>902,250</u>	<u>1,027,500</u>
Total assets	<u>\$1,717,781</u>	<u>\$1,570,996</u>
 LIABILITIES AND NET ASSETS		
CURRENT LIABILITIES		
Accounts Payable	\$20,084	\$4,288
Accrued Payroll	<u>2,892</u>	<u>4,263</u>
Total Liabilities	\$22,976	\$8,911
 NET ASSETS		
Without donor restrictions	\$552,555	\$499,585
With donor restrictions	<u>1,142,250</u>	<u>1,062,500</u>
 Total net assets	 <u>1,694,805</u>	 <u>1,562,085</u>
Total liabilities and net assets	<u>\$1,717,781</u>	<u>\$1,570,996</u>

Note: The Partnership provides down-payment assistance to homebuyers in the form of zero-interest 10-year forgivable loans. The loans are proportionally forgiven each year the homebuyer remains a resident beginning in year five and become fully forgiven after 10 years. Loans receivable at June 30, 2022 consisted of loans to 67 homebuyers totaling \$1,067,500. Loans started to be forgiven in August 2020 and the unforgivable portion of all loans are secured by a second lien on the property. Accumulated loan forgiveness expense as of June 30, 2022 was \$165,250.

FINANCIAL POSITION

FY'22 STATEMENT OF ACTIVITIES

	<u>Unrestricted</u>	<u>Temporarily Restricted</u>	<u>Total</u>
REVENUE AND SUPPORT			
Contributions	\$310,000	\$200,100	\$510,100
Donated services	2,982	-	2,982
Interest	164	-	164
Total revenue and support	313,147	200,100	513,247
EXPENSES			
Program services	302,889	-	302,889
Supporting activities		-	
Management and general	53,376	-	53,376
Fundraising	24,262	-	24,262
Total expenses	380,527		380,527
Net assets released from restrictions	120,350	(120,350)	-
Change in net assets	52,970	79,750	132,720
Net assets - beginning of year	499,585	1,062,500	1,562,085
Net assets - end of year	\$552,555	\$1,142,250	\$1,694,805

Note: The Partnership's FY'22 financial statements were audited by an independent auditor, Wegner CPAs.

2023 WORK PLAN

The Partnership is implementing aspects of the *University Community Vision 2030* that both the City of College Park and the University of Maryland agree on. Here are the priority areas of focus and main activities for the Partnership based on the correlating goals of the *University Community Vision 2030*. This is not an all-inclusive list of what Partnership staff will work on. These focus areas will receive the bulk of Partnership staff's attention from January 2023 to December 2023 to achieve our 2030 goals.

HOUSING AND DEVELOPMENT

Vision 2030 Goal: Retain and attract homeowners in single and multi-family dwellings.

Focus area:

1. Implement the Community Preservation Trust
2. Continue the existing Homeownership program and explore expansion
3. Develop and implement plan for graduate student housing

TRANSPORTATION & MOBILITY

Vision 2030 Goal: Increase walkability and bikeability throughout our community

Focus area:

1. Use current bonds to support the design and engineering of the Campus Drive bike path and Riverwalk
2. Host Trolley Trail Day 2023
3. The committee can review existing and future trails and identify gaps in east/west trail connections

PREK-12 EDUCATION

Vision 2030 Goal: Maintain and enhance K-12 educational opportunities

Focus area:

1. Marketing for all pre-K-12 educational opportunities in College Park
2. Explore developing "Teacher Next Door" incentives/program
3. Support College Park Academy to build on its success and expand to include elementary grades

MARKETING

Vision 2030 Goal: Marketing

Focus area:

1. Develop enhanced, coordinated marketing of the City and the University as a top college town to live, work, play, and be educated

PUBLIC HEALTH AND SAFETY

Vision 2030 Goal: College Park is a healthy and safe Community for all residents, employees, students, and visitors

Focus area: The decision was made by the Partnership Board to not focus on Public Health and Safety as a committee at this time, however, we continue to follow student code of conduct referrals, noise violations, and nuisance properties.

Note: In keeping with the University Community Vision 2030, all of our work will include the values of sustainability and equity.

PARTNERSHIP VISION, MISSION, AND VALUES

The Partnership's Vision, Mission and Values/Guiding principles, statements were updated as part of the *University Community Vision 2030* process.

Vision

The College Park City - University Partnership is a model community development organization known for the success of its initiatives and collaborations. It is recognized and valued by the city and university community. The Partnership catalyzes the ambitions of the City and University to create a thriving, equitable, and sustainable community for all.

Mission

The College Park City - University Partnership recognizes that the success of the City of College Park and the University of Maryland are linked together. It works in dynamic collaboration to creatively and effectively facilitate cooperative efforts that achieve shared community purposes. The Partnership advances initiatives and policies to make College Park a more thriving, equitable and sustainable community for all.

Values/Guiding Principles

Collaborative: The Partnership collaborates with our members, the City of College Park and the University of Maryland, as well as partners including Prince George's County, the State of Maryland, and other stakeholders.

Strategic: The Partnership is strategic about the activities it engages in. It implements projects and programs that directly benefit the community and catalyzes the work of partners to achieve the shared goal of a thriving, equitable and sustainable College Park.

Inclusive: The Partnership seeks to engage and involve the whole community in its work, recognizing that a diversity of perspectives, experience and skills will ensure better and more sustainable outcomes.

Focused: The Partnership makes realistic plans, sets appropriate deadlines, and secures partners and resources it needs to be successful.

Transparent: The Partnership is visible and accessible to our partners and the public. We make our workplans, meeting minutes, and other materials readily available. We spend dollars wisely and effectively, conduct an annual audit, and publish an annual report.

LEADERSHIP AND CONTACT INFORMATION

BOARD MEMBERS

Richard Wagner, AIA, PHD, Chair
Carlo Colella, UMD Vice President for Administration and Finance, Vice Chair
Edward J. Maginnis, UMD Assistant Vice President for Real Estate, Treasurer
Stephen Brayman, former Mayor of College Park
Erica Bondarev Rapach Former Associate Director, The Clarice Smith Performing Arts Center
Maxine Gross, former City Councilmember
David Iannucci, Chief Executive Officer, Prince George's Economic Development Corporation
Dr. Patricia 'Patty' Perillo, UMD Vice President for Student Affairs
Hon. Jim Rosapepe, Maryland State Senator, District 21
Ken Ulman, President, Margrave Strategies
Kenny Young City Manager, City of College Park

STAFF CONTACTS

Susan Hartmann, Executive Director
510-332-2347, shartmann@collegetparkpartnership.org

Valerie Woodall, Associate Executive Director
845-649-2477, vwoodall@collegetparkpartnership.org

Kendra McAbee, Program Associate
240-626-1150, kmcabee@collegetparkpartnership.org

Daniel Cunningham, Executive Director for the Community Preservation Trust
240-463-4515, dcunningham@communitypreservationtrust.org

Beth Wolde, Senior Associate, Community Preservation Trust
240-696-9548, bwolde@communitypreservationtrust.org

CONNECT



WEBSITE	www.collegetparkpartnership.org
FACEBOOK	www.facebook.com/collegetparkcityuniversitypartnership
TWITTER	@CPCUPartnership
INSTAGRAM	@Collegetparkpartnership
JOIN OUR MAILING LIST	www.collegetparkpartnership.org/join-mailing-list
DONATE	www.collegetparkpartnership.org/donate

